

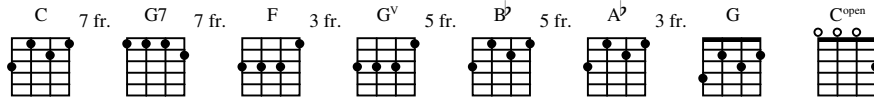
KA 'UKULELE LELE

As recorded by Bryan Tolentino

(From the 2005 Album KA 'UKULELE LELE)

Transcribed by Dominator
Tune Ukuleles GCEA - Low & High
G

Music by Bryan Tolentino



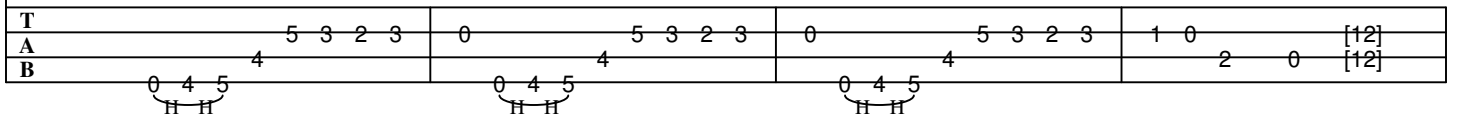
A Intro

Fast ♩ = 176

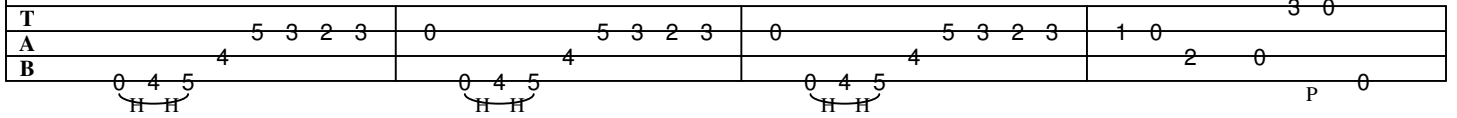


Gtr I

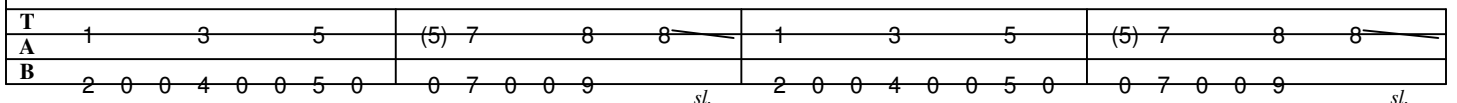
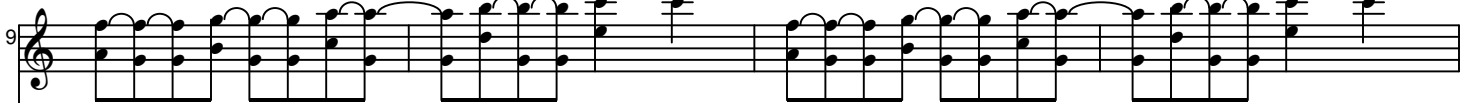
N.H.



To Coda



B Section A



To Dbl. Coda

D.S. al Coda

13

T 1 3 5 (5) 7 0 1 3 5 (5) 7 0

A 1 3 5 (5) 7 0 1 3 5 (5) 7 0

B 2 0 0 4 0 0 5 0 0 7 7 9 9 2 0 0 4 0 0 5 0 0 7 7 9 9

C Section A1

17

T 1 3 5 (5) 7 0 8 1 3 5 (5) 7 0 8

A 1 3 5 (5) 7 0 8 1 3 5 (5) 7 0 8

B 2 0 0 4 0 0 5 0 0 7 7 9 sl. 2 0 0 4 0 0 5 0 0 7 7 9 sl.

21

T 1 3 5 (5) 7 0 0

A 1 3 5 (5) 7 0 0

B 2 0 0 4 0 0 5 0 0 7 7 9 9 2 0 0 4 0 0 5 0 0 7 7 9 9

Gtr III

T 5 0 3 0 5 0 7 0 8 0 10 0 12

A 5 0 3 0 5 0 7 0 8 0 10 0 12

B P P P P P P sl.

D Section B

25

C B^b

T 7 10 7 12 7 10 7 12 7 10 7 5 8 5 10 5 8 5

A 8 8 8 8 8 8 8 8 8 6 6 6 6

B P P P P P P sl. P P P

28

A^b

T 10 5 8 5 10 5 8 5 3 6 3 8 3 6 3 8 3 6 3 8 3 6 3

A 6 6 6 6 4 4 4 4 4 4 4 4

B P P P P sl. P P P P P P sl.

31

G

T 2 3 5 (5) 7 8 10

A 3 5 7 (7) 8 10 12

B

E Section B1

33

C B^b

T 7 10 7 12 7 10 7 12 7 10 7 5 8 5 10 5 8 5

A 8 8 8 8 8 8 8 6 6 6 6

B P P P P P sl. P P P

36

T 10 5 8 5 10 8 5 3 6 3 8 3 6 3 8 3 6 3 8 6 3

A 6 6 4 4 4 4 4 4 4 4 4 4 4 4 4 4 4 4 4 4

B P P sl. P P P P P sl.

A^b

39

T 2 3 2 3 5 3 5 5 7 8 7 8 10 10 12

A 3 5 7 8 10 12

B sl.

G

D.S.S. al Coda

F Section A2

41

T 1 3 5 (5) 7 0

A 2 0 0 4 0 0 5 0 0 7 7 9 9

B P P P P P P sl.

F G^v F G^v C

Gtr III

G Section B2

43

C B^b

T 7 7 8 10 12 10 15 12 10 5 5 6
A 8 8 10 12 12 6 6 8
B

P sl.

46

A^b

T 8 10 8 13 10 8 3 3 4 6 6 11 8 6
A 10 10 4 4 6 8 8 8
B

P sl. P sl.

49

G

T 2 3 5 (5) 7 8 10
A 3 5 7 (7) 8 10 12
B

sl.

H Section B3

51

C B^b

T 7 10 7 12 7 10 7 12 7 10 7 8 9 10 5 8 5 10 5 8 5
A 8 8 8 8 8 8 8 8 10 11 12 6 6 6 6 6
B

P P P P P sl. P P P

54

T 10 5 8 5 6 7 8 3 6 3 8 3 6 3 8 3 6 3 4 5 6

A 6 6 8 9 10 4 4 4 4 4 4 4 4 4 4 4 4 4 4 4 4 4 4

B P P sl. P P P P P P sl.

57

T 2 3 5 (5) 7 8 9 10

A 3 5 7 (7) 8 10 11 12

B sl.

I Outro

59

T 5 3 2 3 0 5 3 2 3 0 5 3 2 3 1 0

A 4 4 4 4 4 4 4 4 4 4 2 0

B 0 4 5 0 4 5 0 4 5 0 4 5 0 4 5 0

N.H.

63

T 5 3 2 3 0 5 3 2 3 0 5 3 0 [12] 3

A 4 4 4 4 4 4 4 4 4 4 2 0 [12] [12] 0

B 0 4 5 0 4 5 0 4 5 0 4 5 0 [12] [12] 0

N.H.

Ka `Ukulele Lele **Performance Notes**

Song Specific Performance Notes

Ka `Ukulele Lele is the title track from Bryan Tolentino's debut CD release. This energetic instrumental indeed has Bryan's fingers jumping off the strings as he executes some fairly speedy passages. The track was recorded with both re-entrant and Low G 4-string Kamaka Ukuleles. I have charted the rhythm track with the re-entrant tuned uke and the main melody is transcribed for the Low G uke. This is a very fun song and perfect to jam with another ukulele player or an acoustic guitarist. Bryan plays a new variation of the B Section on every pass with each one getting a little more complex as he moves through the progression. Ka `Ukulele Lele makes for a great left hand workout and is fun to boot. I suggest just starting things off slowly and gradually work up the tempo. You will soon discover that it is not quite as difficult as it seems at first. Here's where a little practice and patience will pay dividends.

General Performance Notes

Keep in mind that the tablature is just a guideline. I try to transcribe the parts as close as I can to the original recording, however, that doesn't mean that I play them exactly as written. It is hard to duplicate the exact strums that the player is using so I get something close and go from there. The main reason I transcribe is to learn the song and have a permanent reference to make it easier to learn the song again after I have forgotten it months later. I find it very helpful to follow along in the tab while listening to the recording several times before actually attempting to play the song. This gets you familiar with the tab as it relates to the recording.

Tablature can be intimidating to some people. Here is a tip I realized one day. Playing some of the individual fret numbers seemed awkward and uncomfortable until I noticed that they came from within the "**shape of the chord**". So whenever possible fret the chord and then play the other notes from within the chord. This should eliminate some moving around and make things a bit easier.

Above all else, have fun and if you have any questions feel free to contact me at dominic@rcsis.com
<http://www.ukeland.com/~dominator>